



FUTURE-FOCUSED EQUIPMENT

HDD80-E

Fully electric driven horizontal drilling rig



- Quiet
- Eco-friendly
- Safe
- Powerful
- Future-focused

www.streicher-ecotec.de



STREICHER ECOTEC PRODUCTS – PROVEN IN PRACTICE AND FUTURE-FOCUSED

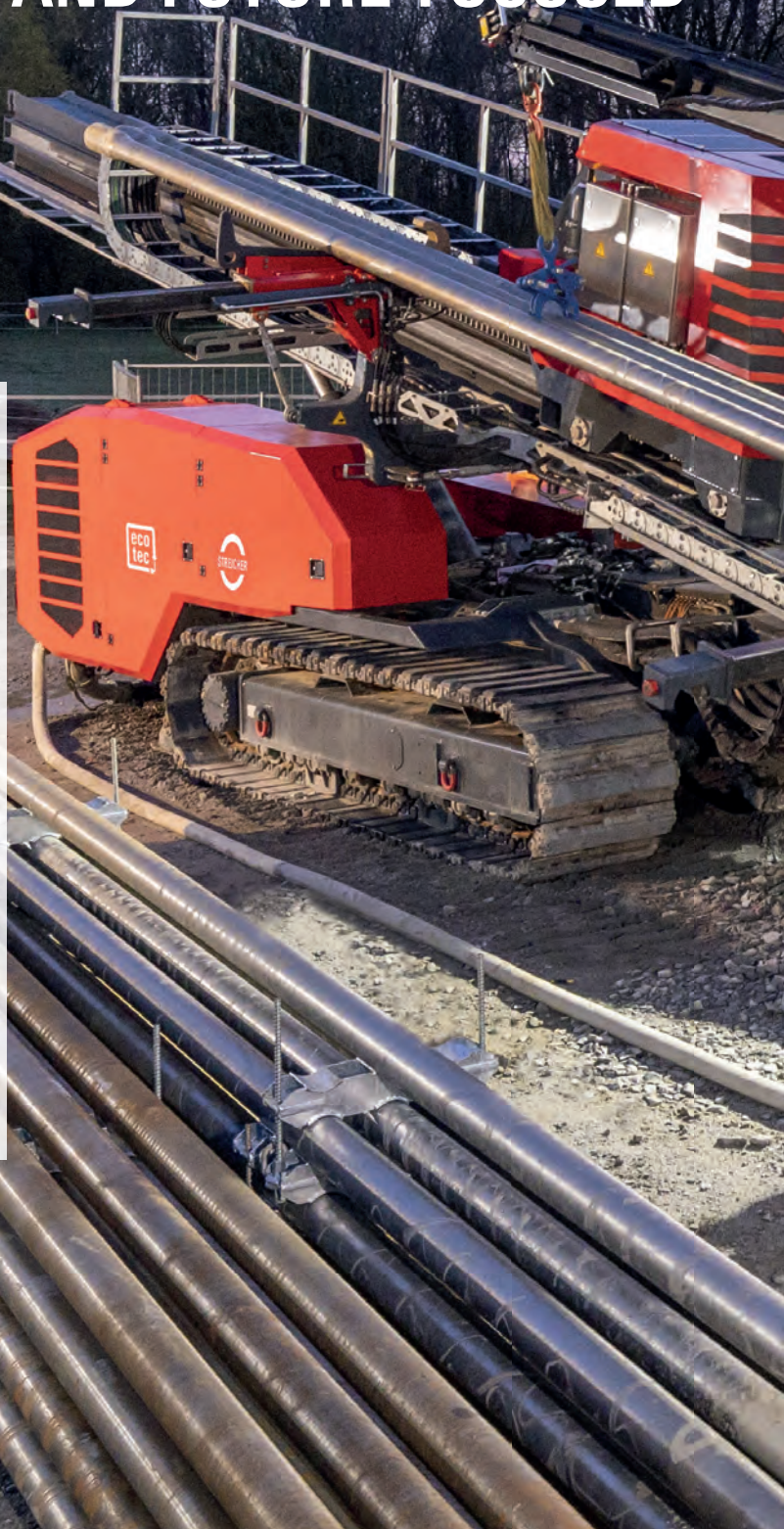
A real alternative to conventionally operated drilling rigs – **these are the ecotec products from STREICHER.**

Horizontal drilling rigs are used for trenchless laying of conduits and cables. Our flagship is currently a fully electric driven 80 t horizontal drilling rig.

STREICHER has completely re-designed the previous diesel-hydraulic rigs as part of an internal joint project. The result is a rig that builds on previous practical experience with HDD rigs and, at the same time, is trend-setting in terms of electrical drive, structure and quality!

The rig impresses with

- **safety**
- **environment friendly technology**
- **sustainability**
- **cost-efficiency**





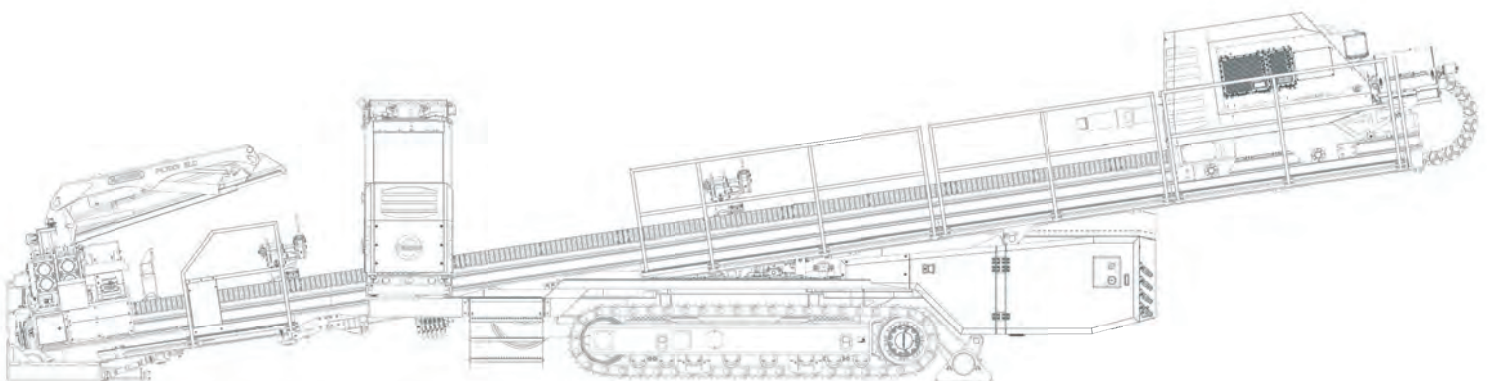


OVERVIEW OF HDD80-E

Renewable energies are becoming more and more important. This saves CO₂ emissions and protects the environment. The entire drive system of the HDD80-E was designed to be fully electric to take up this trend-setting direction. Compared to conventional rigs, this rig also impresses with its significantly higher efficiency rate.

In addition, the new HDD rig combines numerous advantages in many areas:

- The fully electric drive system is able to **temporarily store excess energy**, which can be accessed flexibly when required. This optimises energy consumption.
- **Emission protection** was a key driver when planning the rig. By means of the electrical drive technology, the rig is very quiet, which, in addition to a high level of acceptance in residential and natural conservation areas, also has advantages for occupational safety and for its employees.





PROGRESS IN TERMS OF EFFICIENCY AND SAFETY

- The new technology not only significantly reduces noise but also **CO₂-emissions**. The reduction in CO₂ is becoming more and more important at invitations to tender.
- The HDD-rig offers the option of being **supplied via the public power grid**. In addition, the drilling rig can be moved without external energy sources.
- The HDD80-E also impresses with its **cost efficiency**. In addition to saving energy consumption, operating costs can be reduced significantly. Due to the fully electrical design of the HDD rig, maintenance costs are also reduced to a minimum.
- The operation of the HDD rig is made considerably easier by an intuitive **operating concept**. The large touch panel gives the operator a good overview of the drilling process and the most important drilling parameters.
- In terms of **safety**, the rig is convincing by its integrated anti-collision system, among other items. The rig can be relocated and installed using the remote control. For the operator, this means an optimal field of vision and therefore a reduction in risks of accidents. This offers considerable advantages even in confined spaces.

The HDD80-E combines proven technology with a high degree of sustainability, efficiency and an intuitive, modern operating concept.





STREICHER

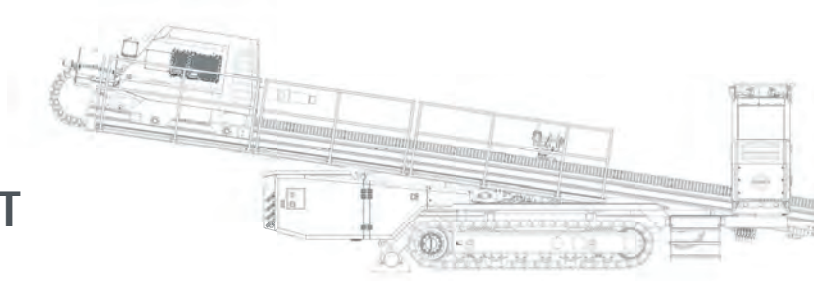
Tor 13

Tor 12

Tor 11

HDD80-E

TECHNICAL PRODUCT DATA SHEET



STREICHER HDD80-E

- Thrust / Pullback load: 800 kN (80 t)
- Power rating: 400 kVA
- Transport weight: 40 t
- Dimensions (LxWxH): 15.6 x 3.0 x 3.2 m
- Ambient temperature: -20 to +40°C

Mast

- Length: 15.3 m
- Max. travel distance: 11.4 m
- Max. drill pipe length: 9.5 m (Range II)
- Mast drilling angle: 8° - 20°
- Anchor plate: heavy-duty-design
- Walkways: width 1.0 m, along the mast

Thrust and pullback

- Type: Rack & Pinion
- Thrust / Pullback load: 800 kN (80 t)
- Min. carriage speed: 0.02 m/min
- Max. carriage speed: 30 m/min
- Drive: electric motor

Rotation drive

- Max. drilling torque: 57,000 Nm
- Max. break-out torque: 70,000 Nm
- Max. rotation speed: 100 rpm
- Power rating: 190 kW
- Drive: electric motor
- Mud swivel: 100 bar / 3" / extra robust design
- Saver sub: NC50 (4 ½" IF)
- Drive shaft adjustment: shiftable (80 mm)

Break-out unit

- Break-out torque: 90,000 Nm
- Make-up torque: 70,000 Nm
- Opening width: 10" (245 mm)
- Movable along the mast
- Height adjustable drill pipe support

Crawler

- Drive: electric motor driven by battery (without connection to grid)
- Control: remote control for crawler and rig-up operation

Electronic performance data

- Power supply: 400 V / 630 A / 3 ph, PE / 50 Hz
- Type: shock resistant mobile electronics, IP67
- Battery: onboard with temperature management system and energy recovery
- Operation of all functions (carriage drive, rotation drive, rig-up etc.) possible
- Cooling: internal water circuit

Control system / operation panel

- Control cabin: onboard, foldable for transportation
- Controls: joystick-operation and b-drive
- Display: 19"-touch-panel
- Cabin with air conditioning and heater
- Lighting of the rig via a large number of LED headlights
- Safety: anti-collision system

Standards

- Machinery directive 2006/42/EC (CE-label)
- HDD-standard (DIN EN 16228-3)
- Low Voltage Directive (2014/35/EU)
- EMC-Directive (2004/108/EU)

Options*

Pipe handling

- Type: automatic pipe loading unit
- Capacity: 5 x 5"-drilling rods
- Rod supports: integrated in the mast with high precision and teachable position

Pipe handling crane

- Loading crane, remote controlled
- With integrated pipe gripper

Mud pump (onboard)

- Triplex-piston pump
- Drive: electric motor
- Power rating: 146 kW
- Max. pressure: 62 bar
- Flow rate: 1,000 l/min (continuous)
1,500 l/min (max)
- Pulsation damper: yes
- External feed-in: possible (3" - Fig. 1502)

Mud pump (external)

- Various manufacturers possible
- Drive: electric motor
- Software integration in operator's control of drilling rig

Control system

- Camera system: four cameras with permanent display in cabin
- Data recording: drilling data can be recorded and stored for later viewing
- Two-way radio
- Customisable remote access and remote maintenance

Further equipment

- Measuring cable reel: automatic reel with camera for 100 m measuring cable
- Integrated high pressure cleaner
- Rubber pads for crawler tracks

*further options available on demand



**DYNAMIC POWERFUL AND
ECO-FRIENDLY**

**DRILLING INNOVATIVELY AND WITH HIGH-PERFORMANCE.
OUR ECOTEC SERIES COMES TO PERFECTION WITH THE HDD45-E UNIT.**

